

*Qūbā*  
*(Ring Worm)*

Standard Unani treatment  
Guidelines for common  
diseases

RINGWORM



# INTRODUCTION

★ It is a disease manifested by periodical occurrence of roughness over any part of skin.

★ It is caused by →

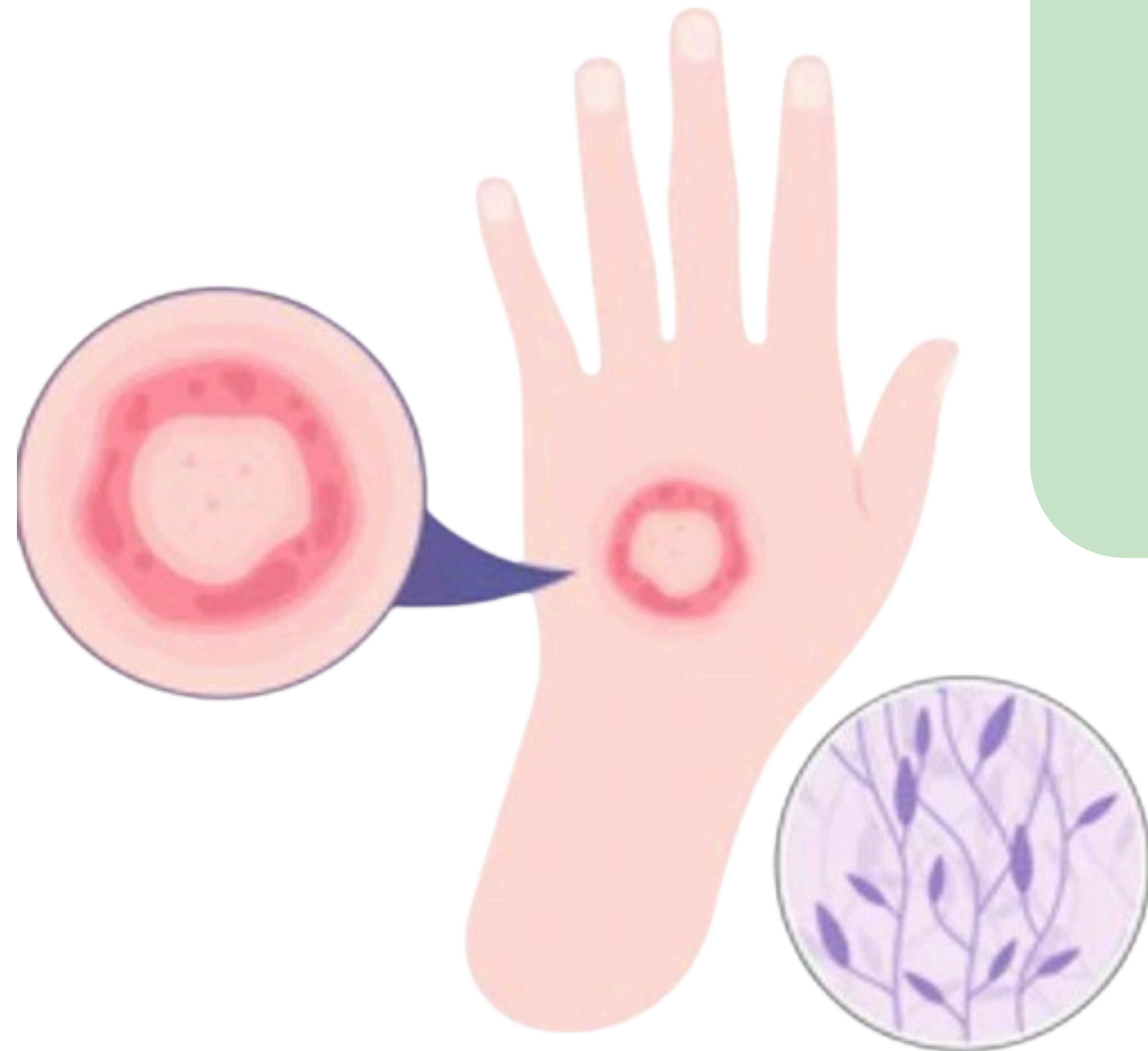
- Sawdā Muhtaraq (Burnt black bile)

# INTRODUCTION

★ It is characterized by



appearance of round elevated,  
itchy,  
scaly  
and blackish or  
reddish patches on the affected part of skin.



# Usūl-i 'Ilāj

(Principles of treatment)

01

Tanqiyā-i Sawdā (Evacuation of black bile)

# ‘Ilāj bi’l-Dawā’ (Pharmacotherapy)

★ **Joshānda-i Aftīmūn**

★ **Local application of paste of Murdār Sang (Litharge), Roghan-i Gul and vinegar.**

★ **Local application of paste of**

- Gandhak (Sulphur),
- Behroza (Pinus longifolia, Roxb.) and
- vinegar.

★ **Local application of paste of**

- Ushq (Dorema ammoniacum, Don.) and
- vinegar.





# Compound drugs

<b>Roghan-i Gandum</b>	Local application
<b>Marham-i Qūbā</b>	Local application



# 'Ilāj bi'l-Tadbīr (Regimenaal therapy)

**Irsāl-i 'Alaḳ (Leeching)**

**Fasd (Bloodletting)**

**Hijāma (Cupping)**

**Hammām (Bath)**

# Dietary recommendations

- Mā' al-Jubn

# Dietary restrictions

- Aghziya Muwallid-i Sawdā

# Tahaffuz (Prevention/Precaution)

- Muwallid-i Sawdā Tadābīr (Black bile producing regimens) to be avoided.

# References

- Arzānī M A, YNM, *Mīzān al-Tibb*, Matba‘ Qāsmī, Deoband, p. 172.
- Qamrī Abū al-Mansūr al-Hasan, 2008, *Ghinā Munā* (Urdu Translation), CCRUM, New Delhi, pp. 481-482.
- Khān M A, 1906, *Iksīr-i A‘zam*, Vol. IV, Matba‘ Nāmī Munshī Naval Kishor, Lucknow, pp. 214-215.
- Nafīs b. ‘Iwaz, 1326H., *Sharah al-Asbāb wa-al-‘Alāmāt*, Vol. II, Matba‘ Nāmī Munshī Naval Kishor, Lucknow, pp. 214-215.
- Majūsī ‘Alī b. ‘Abbās, 2005, *Kāmil al-Sanā ‘a al-Tibbiyya*, Vol. II, CCRUM, New Delhi, pp. 202-203.
- Anonymous, 2006, *National Formulary of Unani Medicine*, Part I, CCRUM, New Delhi, p. 165.

Thank you